



The Blair Bell Education Centre



L E A R N

T E A C H

D I S C O V E R

The Blair Bell Education Centre

“Our customers’ needs and expectations are paramount and we endeavour to monitor and evaluate our service to be responsive to these. The flexibility of our facilities together with the support of Education Centre staff will help ensure that your event is a success every time.”

The Blair Bell Education Centre

LIVERPOOL WOMEN'S NHS FOUNDATION TRUST

Liverpool Women's Hospital became operational in February 1995 with the aim of being the best hospital for the care of women and babies. It is now the largest single-site hospital for women's services in the UK and one of the largest in Europe offering outpatient, maternity, neonatal, genetics, gynaecology services and reproductive medicine.



THE EDUCATION CENTRE

Located in the grounds of Liverpool Women's NHS Foundation Trust, the brand new purpose built Blair Bell Education Centre offers state-of-the-art facilities for professional presentations, supported by the Education Centre staff. Designed and installed by skilled professionals, our audio-visual facilities enable speakers to give dynamic multimedia presentations. With a choice of room sizes and excellent support services, we can accommodate all kinds of events such as exhibitions, conferences and training courses.



The Blair Bell Education Centre



The Blair Bell Education Centre

FACILITIES

Atrium

With its natural light and spacious atmosphere, the Atrium is an ideal area for exhibitions, displays, catering and refreshments.



Lecture Theatre

Located on the ground floor, the lecture theatre has comfort cooling and contains 100 non-fixed chairs. The lecture theatre features a touchscreen control panel to give the speaker full control of all equipment including PC with wireless keyboard and remote mouse, VCR, DVD player, visualiser, plasma TV and lighting. Other services include video conferencing, a built-in loop induction facility and message service via an LED system for minimal disruption.



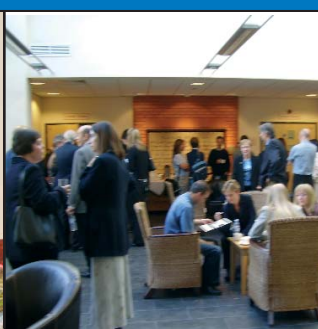
2 Seminar Rooms

Each seminar room has comfort cooling and offers flexible seating and portable tables for a variety of room layouts. Both rooms can accommodate up to 25 people in theatre style or 12 people in boardroom style. There are plasma TVs, PCs, visualisers and whiteboards in each room.



Aintree Suite

The Aintree suite offers flexible seating for up to 35 people in theatre style or 16 people in boardroom style. The room contains a projection screen and LCD hire is available.



The Blair Bell Education Centre

SUPPORT SERVICES

- FREE off-site secure car parking within a short walking distance of the hospital.
- Full catering facilities provided by in-house caterers, Sodexo.
- A.V. technical assistance on site.
- Assistance with fax, photocopying, binding and laminating.
- Messaging service via an LED system for minimal disruption.
- Venue is accessible to disabled users.
- Reasonable rates negotiated with local hotels for overnight accommodation.



CUSTOMER CARE

We provide a modern, safe environment in which to hold your event and our priority is to support your event to the highest standard. We endeavour to monitor and evaluate our service to be responsive to our customers' needs and expectations. The flexibility of the facilities together with the support of the Education Centre staff will help ensure that your event is a success every time.





The following are artists whose work is featured in the brochure:
Stephen Hitchen • John Southurst • David Stanley
Peter Dover • Norma Heron • Gerald Buchanan

The Blair Bell Education Centre
Liverpool Women's NHS Foundation Trust
Crown Street
Liverpool L8 7SS
Tel: 0151 702 4412
Fax: 0151 702 4415
www.lwh.org.uk



INVESTOR IN PEOPLE

MAP & DIRECTIONS

Welcome to The Blair Bell Education Centre.

We are situated in The Liverpool Women's NHS Foundation Trust on Crown Street off Upper Parliament Street, approximately one mile from Liverpool City centre. For those who have not visited the hospital before, it is a modern building with a distinctive light blue roof.

Travelling by Car

From the M62 motorway

The M62 motorway terminates on the outskirts of Liverpool just 3 miles away from The Liverpool Women's NHS Foundation Trust. Follow the signs for the City Centre until you see signs for The Liverpool Women's NHS Foundation Trust.

From the Birkenhead/Wallasey Tunnels

If using the Birkenhead tunnel take the left turn (all docks) exit from inside the tunnel. Follow the signs for Albert Dock and Central Tourist Attractions continue on to the Albert Dock (Wapping/Chaloner St) following the signs for The Liverpool Women's NHS Foundation Trust.

From Liverpool South

Follow the signs for the City Centre until you see the signs for The Liverpool Women's NHS Foundation Trust.

Bus Services

There are a number of buses that stop at the main entrance of the hospital and many others stop within walking distance.

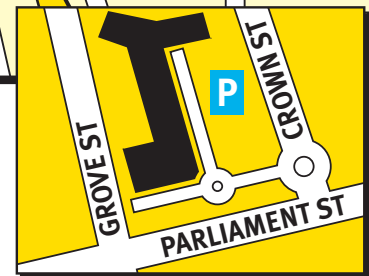
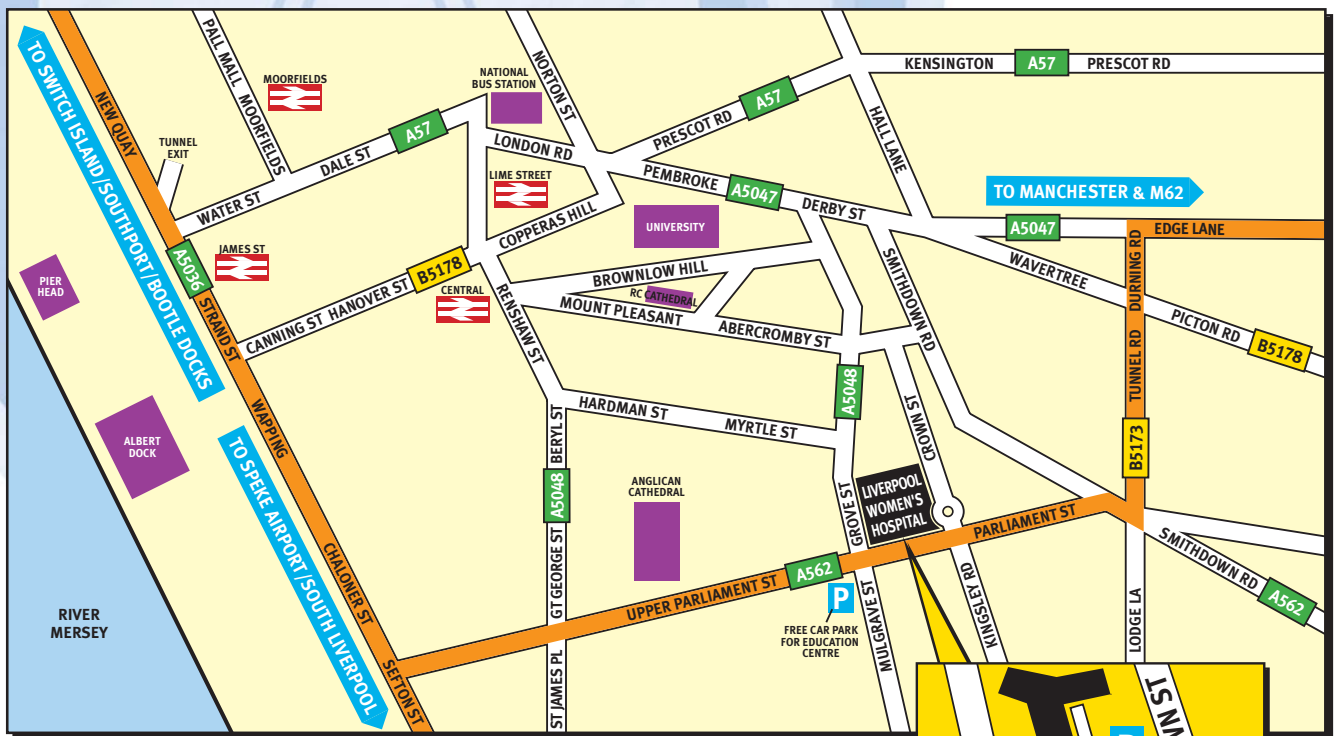
Travelling by Train or Coach

Liverpool Lime Street Station (British Rail), Central Station (Merseyrail-local rail network) and the National Express coach station are all in the City Centre, which is a short bus/taxi journey from the hospital.

Full Information on bus and train services is available from Mersey Travel information line 0151 236 7676

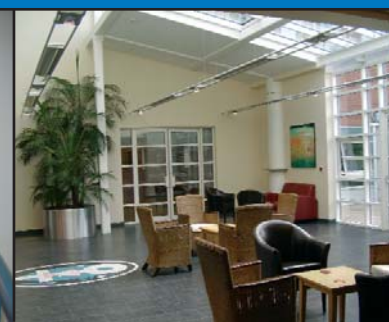
Ferry Services

Isle of Man and Dublin services berth at Liverpool Pier Head, it is approximately 3 miles to the Hospital. Belfast ferries arrive at Bootle docks. It is approximately 5 miles to the hospital.



Air Travellers

You may arrive at either Liverpool International Airport (Speke) or Manchester International Airport. From Speke follow the route for the City Centre until you pick up the signs for The Liverpool Women's NHS Foundation Trust. Manchester International Airport is approximately 35 miles away via M56, M6 and M62 motorways



ROOM LAYOUTS

NATURAL LIGHTING

Lecture Theatre	✓
Seminar 1	✗
Seminar 2	✓
Aintree Suite	✓

THEATRE STYLE

Lecture Theatre	100
Seminar 1	25
Seminar 2	25
Aintree Suite	35

BOARDROOM

Seminar 1	12
Seminar 2	12
Aintree Suite	16

DIMENSIONS (METRES)

Lecture Theatre	13 x 11
Seminar 1	8 x 5
Seminar 2	8 x 5
Aintree Suite	5.5 x 13



Lecture Theatre



Atrium



Seminar Room 2



Aintree Suite



CATERING

All Catering is provided by our in-house catering company Sodexo.

Menus include:

- Breakfast Meeting
- Sandwich Buffets
- Gourmet Sandwich Lunch
- Executive Sandwich Lunch
- A variety of finger buffets
- Healthy Options Buffet
- Hot Fork Buffets
- Salad Selections
- Sweet Options
- Essentials (tea, coffee etc.)

